

Cromwell Road, KT4 7JR

Asking Price £925,000



# Cromwell Road, KT4 7JR

Opportunity for the discerning to acquire an impressive 1790 ft<sup>2</sup>, detached residence offering truly flexible accommodation, currently predominantly on the ground floor.

Occupying a generous Southwest facing plot, not only comfortably accommodating a large sun terrace framing a luxury heated pool but also mature borders, specimen trees and shrubs

Not often does a home within grasp, boast the rare provision of a generous heated pool! Seeking low impact exercise, sustain health and wellbeing, enticing active outdoor entertainment for kids or the sheer seduction of luxury leisure for all whether a family gathering or entertaining a great focal point.

Quietly situated, set in a prime residential street, whilst within easy reach of the comprehensive amenities, eateries to be found more immediately at Worcester Park and Tolworth (with mainline stations to Waterloo) whilst Kingston and Epsom are but a short drive, bus ride or train ride away.

Served by good Schools, sports and recreation facilities including "The River Club", offering all you would expect from a local country club within a few minutes' walk.

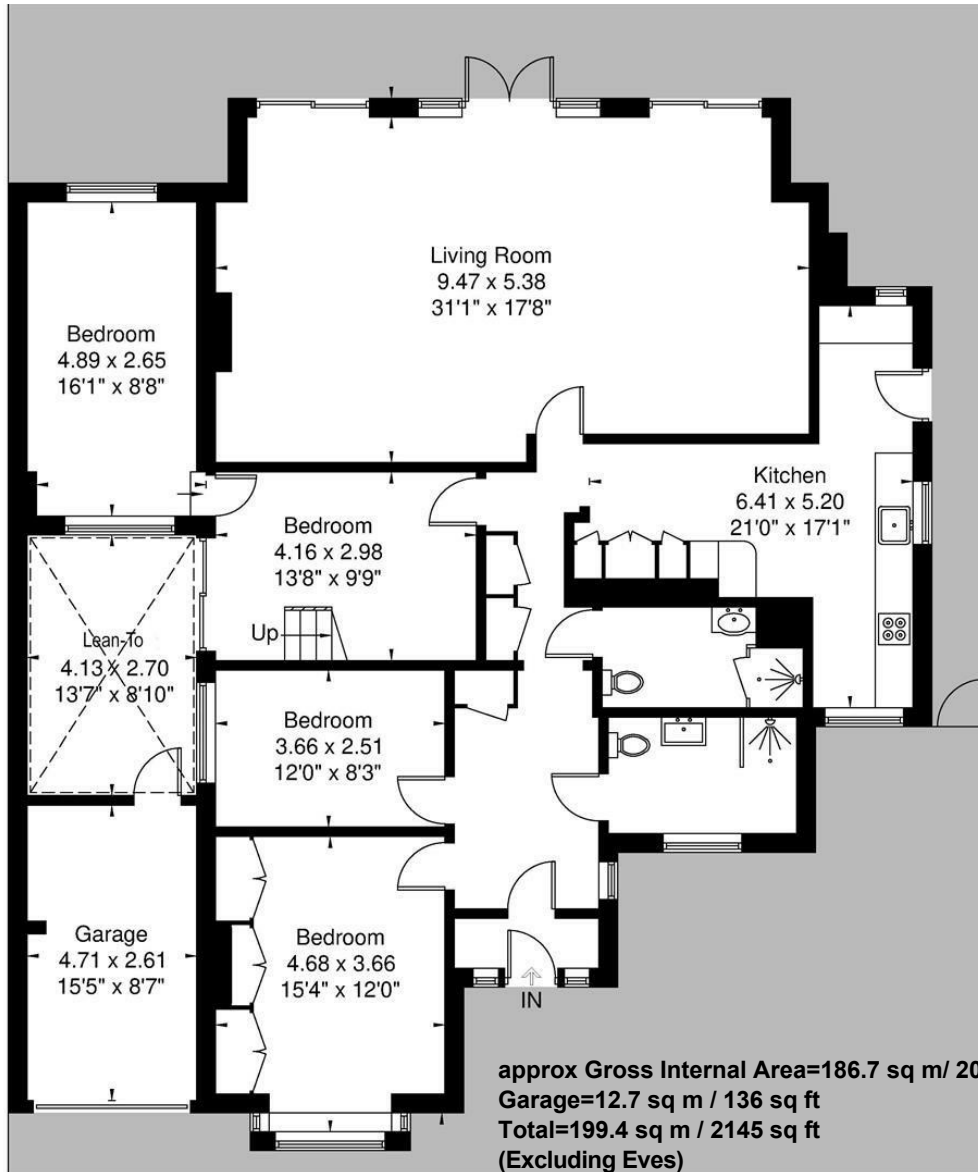
Green space to hand with the local parks of Auriol, Shadbolt and Ewell Court Parks. Whilst the Hogsmill stream and wetlands nature reserve with surrounding Green belt provides connexions to Horton country Park , Epsom Common and downstream the Thames.



- Detached
- 1790 Sqre Feet of Flexible Accomadation
- Great Potential
- 3-4 Bedrooms
- Double Glazing and Gas Central Heating
- Large South West Facing Garden
- Large Terrace with Luxury Heated Swimming Pool
- Parks and Open Spaces Close By
- Comprehensive amenities and mainline Stations
- NO FORWARD CHAIN

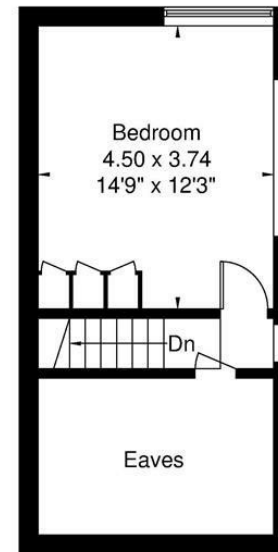


**Cromwell Road, Worcester Park, KT4 7JR**



EPC rating D  
Council tax Band F

Front Extends to 12m 39'  
Rear Extends to 35m 114'10"



**First Floor**  
20.4 sq m / 219 sq ft

approx Gross Internal Area=186.7 sq m / 2009 sq ft  
Garage=12.7 sq m / 136 sq ft  
Total=199.4 sq m / 2145 sq ft  
(Excluding Eaves)

